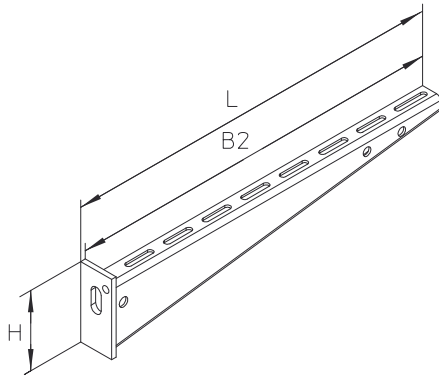


KW

Bracket, standard



Wall/handle bracket, standard version, with welded-on back plate. Certified according to DIN EN 61537. For mounting on walls or hanging struts.

F_D/P : coefficient for calculation of the dowel load F_D with effective bracket load P respectively the sum of effective bracket loads.



Pre-galvanised (DIN EN 10244-2)

Product	L	B1	B2	H	P_{max}	F_D/P	G
KW 010GV	124 mm	100 mm	120 mm	45 mm	1,40 kN	3,10	0,120 kg
KW 020GV	225 mm	200 mm	220 mm	70 mm	2,00 kN	3,00	0,299 kg
KW 030GV	326 mm	300 mm	320 mm	70 mm	2,00 kN	4,00	0,409 kg
KW 040GV	426 mm	400 mm	420 mm	90 mm	2,40 kN	3,60	0,702 kg
KW 050GV	528 mm	500 mm	520 mm	110 mm	2,10 kN	3,40	1,238 kg
KW 060GV	628 mm	600 mm	620 mm	110 mm	2,10 kN	4,00	1,447 kg
KW 070GV	728 mm	700 mm	720 mm	110 mm	3,00 kN	5,68	2,120 kg

Hot-dip galvanized, according to BS 729 (DIN EN ISO 1461)

Product	L	B1	B2	H	P_{max}	F_D/P	G
KW 010F	124 mm	100 mm	120 mm	45 mm	1,40 kN	3,10	0,130 kg
KW 015F	174 mm	150 mm	170 mm	45 mm	1,40 kN	4,10	0,165 kg
KW 020F	225 mm	200 mm	220 mm	70 mm	2,00 kN	3,00	0,320 kg
KW 030F	326 mm	300 mm	320 mm	70 mm	2,00 kN	4,00	0,438 kg
KW 040F	426 mm	400 mm	420 mm	90 mm	2,40 kN	3,60	0,751 kg
KW 050F	528 mm	500 mm	520 mm	110 mm	2,10 kN	3,40	1,325 kg
KW 060F	628 mm	600 mm	620 mm	110 mm	2,10 kN	4,00	1,548 kg
KW 070F	728 mm	700 mm	720 mm	110 mm	3,00 kN	5,68	2,268 kg





Stainless steel, according to ASTM 304 / BS 304 S 3

Product	L	B1	B2	H	P_{max}	F_D/P	G
KW 010E	124 mm	100 mm	120 mm	45 mm	1,50 kN	3,10	0,150 kg
KW 015E	174 mm	150 mm	170 mm	45 mm	1,50 kN	4,10	0,250 kg
KW 020E	225 mm	200 mm	220 mm	70 mm	1,50 kN	3,00	0,305 kg
KW 030E	326 mm	300 mm	320 mm	70 mm	1,50 kN	4,00	0,418 kg
KW 040E	426 mm	400 mm	420 mm	90 mm	2,20 kN	3,60	0,723 kg
KW 050E	528 mm	500 mm	520 mm	110 mm	2,20 kN	3,40	1,082 kg
KW 060E	628 mm	600 mm	620 mm	110 mm	2,20 kN	4,00	1,248 kg

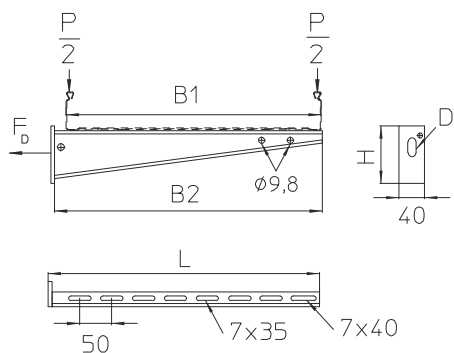
Stainless steel, material no. 1.4571 (ANSI 316 Ti) / 1.4404 (ANSI 316 L)

Product	L	B1	B2	H	P_{max}	F_D/P	G
KW 010E4	124 mm	100 mm	120 mm	45 mm	1,50 kN	3,10	0,150 kg
KW 015E4	174 mm	150 mm	170 mm	45 mm	1,50 kN	4,10	0,250 kg
KW 020E4	225 mm	200 mm	220 mm	70 mm	1,50 kN	3,00	0,307 kg
KW 030E4	326 mm	300 mm	320 mm	70 mm	1,50 kN	4,00	0,423 kg
KW 040E4	426 mm	400 mm	420 mm	90 mm	2,20 kN	3,60	0,733 kg
KW 050E4	528 mm	500 mm	520 mm	110 mm	2,20 kN	3,40	1,096 kg
KW 060E4	628 mm	600 mm	620 mm	110 mm	2,20 kN	4,00	1,264 kg

- L** : Length
- B1** : Width
- B2** : Width
- H** : Height
- P_{max}** : Maximum permissible load
- F_D/P** : Dowel-to-anchor load
- G** : Weight

DETAILS / APPLICATIONS





L < 220, D=φ11
L ≥ 220, D=13x30

OPTIONAL ACCESSORIES

SD, KDU 57, KLU, KLR, RP, KHU 57



System E30 - E90. CNBOP-PIB-KOT

